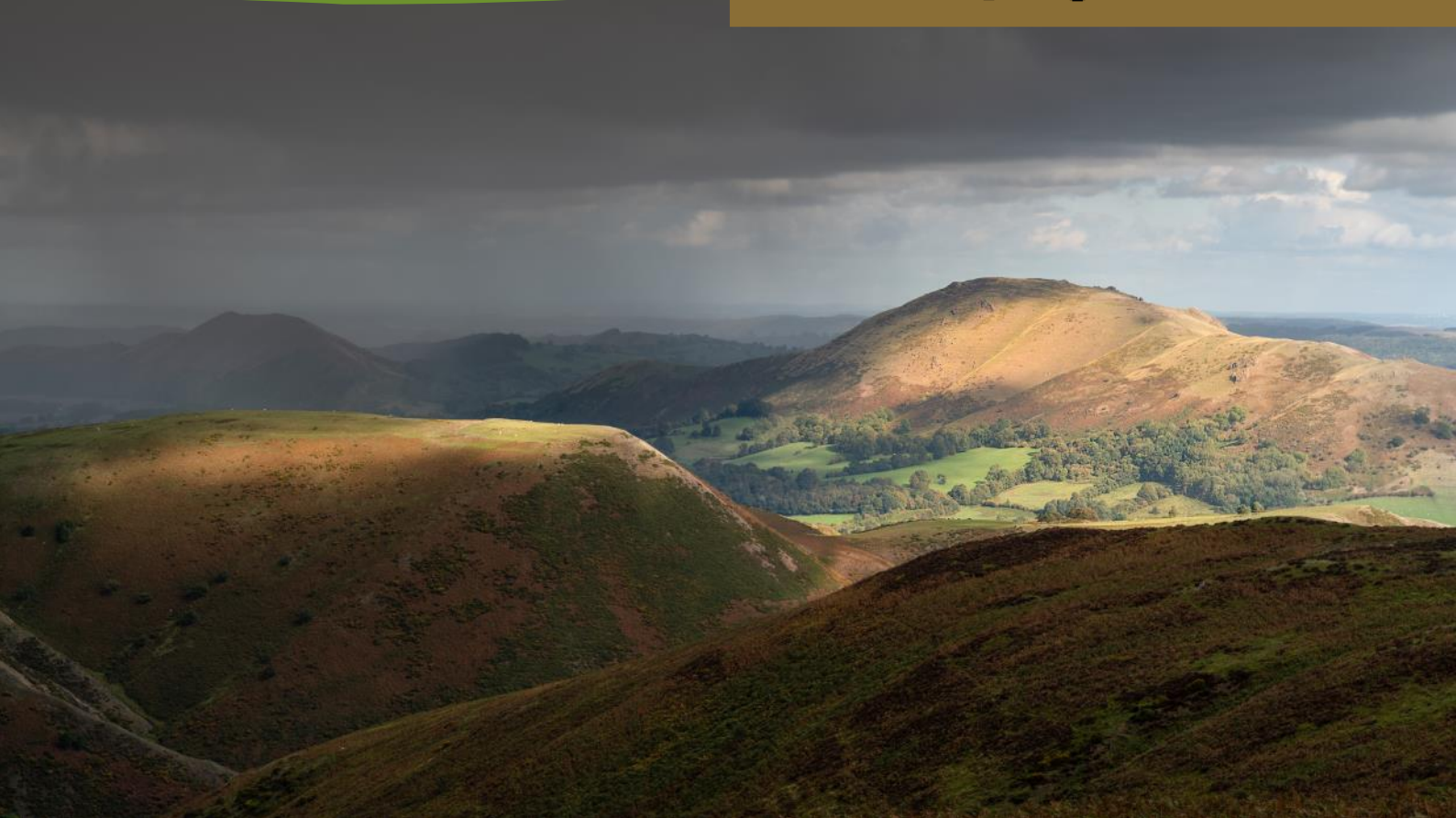




The countryside charity  
Shropshire

# SHROPSHIRE VOICE

*Campaign to Protect Rural England*  
Winter-Spring 2019-20 issue



“Storm on the Shropshire Hills” by Richard Greswell, winner of our landscape photo competition

## Inside this issue:

- Shropshire planning update—Intensive Poultry Units, hedgerow regulations, wind turbines and climate change
- CPRE Shropshire’s Green Clean for 2020
- Our exciting new project with students from Harper Adams College
- Results of our CPRE Shropshire landscape photo competition
- Profile of our new Treasurer, Linda Charie

The newsletter for members of CPRE Shropshire  
See more on our website at [www.cpreshropshire.org.uk](http://www.cpreshropshire.org.uk)

# CPRE Shropshire Planning Update



**S**hropshire Council officers have now delayed publishing the final version of their contentious **Local Plan Review (LPR)** until May 2020, along with another huge raft of new evidence to add to the existing 6,800 pages on the website. Campaigners like us will almost certainly have only the **statutory minimum six weeks** to trawl through everything and mount our arguments for the Government Inspector then to consider whether the plan is “sound”. As we continue to say on our website, **we disagree with the LPR** because:

- *Its targets are too high*
- *Its plans for growth are not sustainable*
- *The process is undemocratic*
- *It still won't get enough affordable housing built*

We could bore you on all four of these topics, but it is the sustainability argument which has now come more to the fore with the whole **Climate Change** debate. Shropshire Council has indeed declared its own **Climate Emergency**, but the Corporate Climate Change Strategy that it continues to develop seems only to deal with the direct activities of Shropshire Council itself. Its recent Climate Change Workshop did look to the County as a whole, but for developers it is pretty much **business as usual**. Nothing must be put in the way of **that great idol of modern times, economic growth**. Those in power seem not to realise that it is the increase in human activity, primarily seen in the **consumption of too much “stuff”**, that is

the chief cause of anthropomorphic climate change. It is also the cause of much of the **environmental destruction** that we fight against in an attempt to Protect Rural England.

There are active campaigns, supported by us, to **protect the Green Belt** around Bridgnorth (at Stanmore) and near Junction 3 of the M54 (around Tong and Shifnal). Recent pronouncements from the top level of Shropshire Council encourage the belief that **Shropshire Council will not now accept overspill from the Black Country**, which has long been on the cards. But we await the final decision on this, which is now not due to be announced until May.

We still look at all Shropshire Council's **100 or so planning applications every week**. There have been fewer for **intensive poultry units (IPU)** for a while, but a couple have popped up more recently. The Tasley IPU is still on hold following the successful High Court win by local campaigners.

People in the South Shropshire Hills AONB have noticed a recent worrying increase in intrusive and frequent jet engine noise over what is meant to be an area of tranquillity. It seems to be linked to some deregulation of airline routes, which may be made worse by legislation proposed in the new Queen's Speech. Please get in touch if you live in the AONB, have also noticed this, and want to help to investigate.

**Charles Green**  
CPRE Shropshire Planning Spokesman



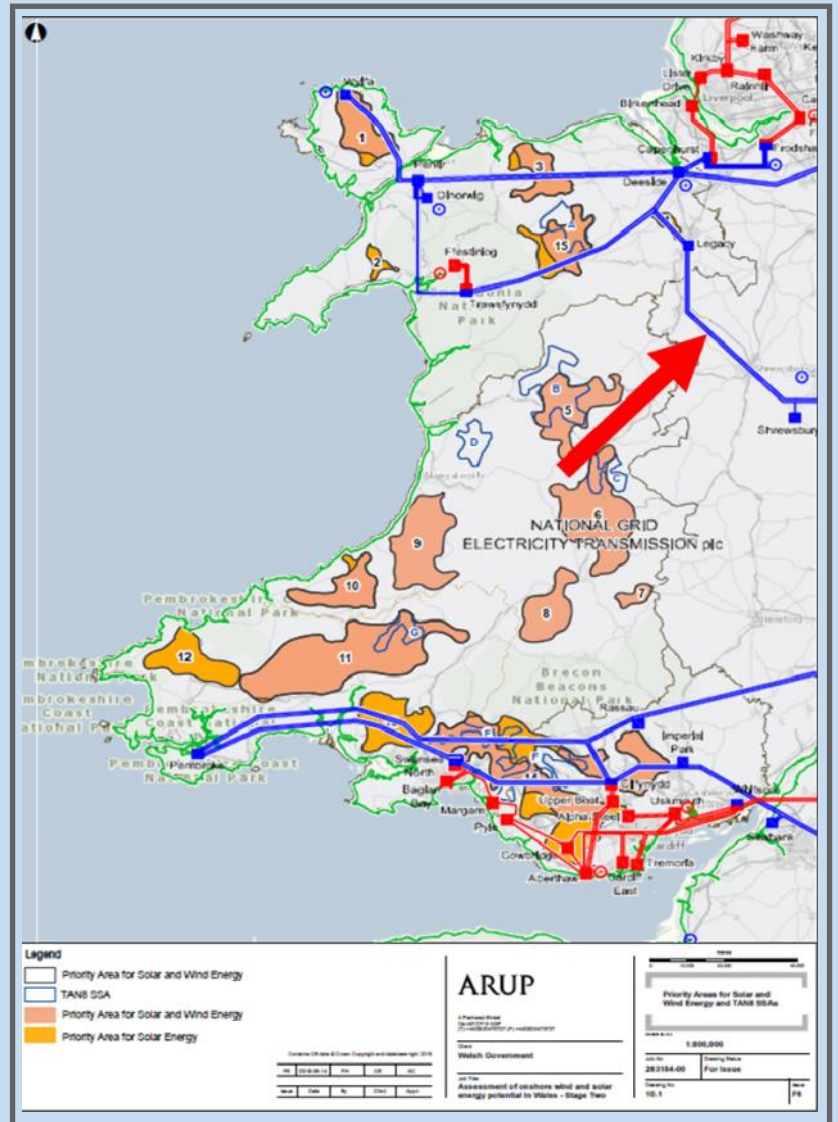
# Wind farms, climate change & hypocrisy

We recently wrestled again with the *No Wind Farms No pylons* campaign when the Welsh Government (WG) published its Draft National Development Framework last year. Here is their map of proposed “Priority Areas for Solar and Wind” on which we’ve superimposed the (slightly stylised) map of the National Grid electricity transmission system (the 50m high 400kV main line). You can just see the old TAN 8 wind-farm areas which caused so much anger, particularly in Montgomeryshire. These new proposed Priority Areas are hugely bigger and more widespread, so alarm bells are ringing again.

The problem is that to get the power out, new wind and solar development on the scale required will have to connect to the national grid in Shropshire (near Oswestry), as indicated by the red arrow, because new power stations in mid-Wales will be as far from the grid as it’s possible to be in this country. So the threat of a giant pylon line through north Shropshire has returned.

Now you may well think that the aim of having more renewable energy generation is consistent with Climate Change goals, and that is what the Welsh Government claims. But at the very same time, in the very same document, they want to pretty well double the capacity of Cardiff Airport. So you could say that the WG, based as it is in Wales’s south coast cities, wants to hit rural Powys to foster its own city-based interests. Those who think that WG are hypocrites who don’t understand the tourist-based economy of its scenic rural heartland include Montgomeryshire’s AM Russell George, who says this scheme “will trash the Welsh countryside”.

The dilemma here is that schemes to save the world seem to require the industrialisation of the countryside that is trying to be saved. It also highlights the fact that Shropshire is not “an island entire of itself” but is affected by cross-border issues. That’s why we keep in close touch with our Welsh colleagues in CPRW, so that we can hear when that bell is tolling.



## Shropshire Clarion Call!



Photo © Andrew Fusek Peters

A Shropshire-based artist will set out from the market town of Bishops Castle in October to walk to Glasgow. With him will be Clarion the Bear, a full size, hand-made, light-weight model of polar bear fashioned from bamboo, willow and heavy duty tissue paper. Bamber Hawes made the towering bear in his spare time as a way to highlight the real and pressing danger of climate change and the need for immediate and radical action. His 300 mile walk is timed to arrive in Glasgow at the beginning of COP26, this year’s crucial summit on climate change, hosted this year by the UK. Bamber said: “I like the idea of a band of people coming together with a purpose. To walk, to talk, to connect with each other and to connect with the landscape by moving through it slowly.” Anyone interested in joining Bamber during his walk can find information on Instagram or Facebook by searching for ‘clarion\_the\_bear’.

# CPRE's GREEN CLEAN



The Green Clean 'team' out and about in 2019

2018 saw the launch of CPRE's Green Clean, a nationwide campaign against litter in our rural spaces. Here in Shropshire, CPRE has now held successful Green Clean events for the past two years.

Last September we held events in Madeley, Oswestry and Rea Valley near Shrewsbury which were supported by 40 enthusiastic volunteers who in total collected 1,477 recyclable items from our green spaces in just 6 hours, this is a staggering amount of litter and we're not counting the tens of bags of general waste also picked.

Thanks to CPRE's Green Clean campaigning, the UK government has made a commitment to introducing a bottle deposit return scheme and DEFRA suggests that we are most likely to see the first introduction in Scotland in 2021. A survey by CPRE suggests that once fully introduced in the UK this could potentially raise £2.3bn for local charities.

The Green Clean overall has been a very interactive and positive campaign message and we want this to continue so in 2020 we are looking at areas that we have not run a litter pick in yet. We offer all the equipment and lead the event itself, but could you help us locally in your area to set up a small or large Green Clean litter pick? Please get in touch with us.

## ... Getting our message across...

CPRE has been a household name for nearly 100 years and has always been vocal about the importance of a protected and invested environment. From the early days of campaigning to remove cluttered advertisement from the roadside to the fights against fracking, CPRE has long been pushing its message to the public with plenty of support. However we are well into a new era of campaigning and much of this is now digital, so in Shropshire we have paired up to get word out.

Our volunteers Charles, Sally, Greg and Connor have been working with the fantastic students of Harper Adams University in Edgmond to create videos which can be used all over social media, our website and can also be found on YouTube.

The videos are being completely developed by the students and acted out by students but with our key messages of a thriving, protected hedgerow and tree population, countryside pollution and building the right homes, at the right time in the right place.

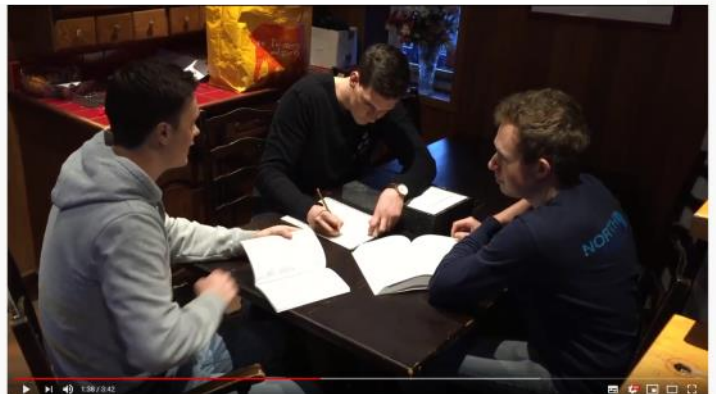
The issues behind these messages are starting to take effect on the next generation and it will get much worse if we don't speak up and work together for a brighter, healthier future.

Earlier In February our volunteers met with the students to review the final videos and select which ones will be used for publication.

It's an exciting opportunity to reach a wider audience with messages we can all relate to and we hope that this work can bring our partnership with Harper Adams and its students even closer.

A special thank you to Emma Tappin and all of the students from Harper Adams and to our volunteers for their input, time and ideas.

### Connor Furnival, Vice Chair, CPRE Shropshire



Still from the Harper Adams /CPRE YouTube video on 'How to Object to Planning Applications'

# CPRE Shropshire Photo competition

Our call for entries for the CPRE Shropshire landscape photo competition last summer attracted over 400 individual entries from amateur photographers of all ages up and down the county.

We were really delighted with the number and quality of images sent in to the competition and we will be using them to enhance our website and newsletters over the following months.

The judging with professional landscape photographers John Hayward (Shropshire & Beyond) and Tina Corfield took place in September. After a long and very tiring, but enjoyable day, we had selected an overall winner, two runners up, a Selby Martin Award winner and 11 highly commended images.

The Shropshire Hills AONB starred in several of the selected entries, including the overall winner "Storm over the Shropshire Hills" by Rick Greswell (opposite and cover). This shot simply stood out with its drama, colour and punchy lighting, and its lovely views.

Runner up prizes went to Janet Lewis for her snowy Offa's Dyke shot and Olwyn Wall's dreamy photograph of Bridgnorth on a misty morning (both opposite).

Selby Martin, our Vice President, chose his favourite image and the Selby Martin Prize was awarded to Chris Lewis for his very still and graceful "Trees in the Mist" (below). A further eleven entries were 'highly commended'.

Entrants were asked to say in a short sentence what they loved about Shropshire, and what became very clear is the deep affection in which the Shropshire landscape is held.

We had a wonderful time looking at everyone's entries and hope you might get a chance to see the exhibition of winning works as it moves around the county in 2020. Thank you to all the entrants and to our very generous sponsors, in particular Sansaw Estate and Kaleidoscope Framing.

*"Shropshire as a county is a "Best kept secret", and deserves to have continued protection from the ravages of inappropriate development. I love the Shropshire landscape because the views and tranquillity are rather special and need to be preserved" (AL)*

*"This place is special to me, as visiting these beautiful trees is helping me recover from long-term chronic illness and is restoring my long-lost passion for photography" (TB)*



"Trees in the Mist" by Chris Lewis which won the Selby Martin Award

## CPRE landscape photo winners: Where you can see them in 2020

After a very successful first show in the Courtyard Stables at Attingham Park during October half term week, all fifteen images will tour the county during the next few months.

They can be seen at the Willow Gallery, Oswestry until 28th February and will then move to the Bear Steps Gallery in Shrewsbury from 1st to 14th March.

Then we hope to take them to Bridgnorth Library, Wem Town Hall and have an exhibition at the Kerry Vale Vineyard café in Church Stoke. Other venues will also be added to the tour if they can be organised. Please keep an eye on our website for updates. It may be coming to a gallery or community space near you!

If you know of a venue that might be willing to host an exhibition of the work in 2020 (or beyond), drop us a line.

**Sarah Jameson**  
Administrator, CPRE Shropshire



Our busy exhibition launch at Attingham Park in October 2019



Overall winner: "Storm on the Shropshire Hills" by Richard Greswell (also our cover photograph)



Joint runner up: "Misty Morning on the Severn" by Olwyn Wall



Joint runner up: "Offa's Dyke on Llanfair Hill" by Janet Lewis

## Changing logos

You will see that our CPRE logo has changed in this issue, falling into line with the brand identity changes nationally for CPRE.

The new identity will be rolled out gradually across our website and social media pages over the next few months.

## CPRE Shropshire Profile: Linda Charie, Honorary Treasurer

**L**inda Charie became the new Honorary Treasurer for our CPRE Shropshire branch at our AGM last summer, and we are delighted to welcome her. Here are a few words from Linda to introduce herself:

“After retiring to South Shropshire five years ago and enjoying the beautiful rural area where I live, I feel strongly about protecting this wonderful green space.

I joined CPRE Shropshire last year after becoming involved in opposing the development of an industrial size poultry unit in my village. This made me aware of the great threat to the countryside of poor planning decisions. I am enjoying putting my skills to good use in my role as Treasurer for CPRE Shropshire.”



## Stop press on Shropshire Council's shenanigans

As we go to press (17th Feb 2020), there is much discussion on the airwaves about Councillor Nutting's announcement at Cabinet of all the money they can generate to fund Shropshire Council's capital programme by selling off much of the Council's landholdings. Foremost in his mention was the old 100-acre Oxon former smallholdings estate on the outskirts of Shrewsbury. He said that the Oxon Link Road and the North West Relief Road will release this for development, and talked about getting £30 million for it.

Now Shropshire Council is the planning authority that will decide whether to allow these very controversial roads to go ahead and people are asking whether it is right for them to be able to boost the value of their own assets by this means. No wonder they are keen to promote the NWRR and no wonder they refuse to attend meetings for fear of being accused of pre-determination.

You can see what land Shropshire Council owns via their interactive land and property map at <https://shropshire.gov.uk/assets-and-estates/interactive-land-and-property-map/> This map shows the proposed route, cutting right through the Council's Oxon Estate (in blue).

(The map below is adapted from Shropshire Council's North West Relief Road Flythrough map).



### CPRE Shropshire: contacts

**Administrator:** Sarah Jameson 01547 528546  
[admin@cpreshropshire.org.uk](mailto:admin@cpreshropshire.org.uk)

#### CPRE Shropshire Districts:

**Bridgnorth:** Stella & David Voysey  
[david.voysey@jacd.co.uk](mailto:david.voysey@jacd.co.uk)

**Oswestry:** Charles & Sally Green  
[charleswgreen@msn.com](mailto:charleswgreen@msn.com)

**Shrewsbury & Atcham:** Susan Lockwood  
[susanlockwood345@btinternet.com](mailto:susanlockwood345@btinternet.com)

**Telford & Wrekin:** Connor Furnival  
[cpretelfordwrekin@gmail.com](mailto:cpretelfordwrekin@gmail.com)